

Slim Classic - Hardwired Intercom System



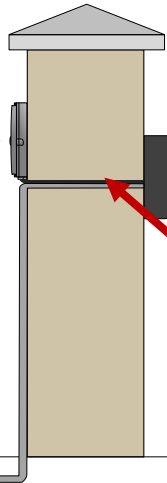
STILL HAVING TROUBLE?
Find all of our support options such as Web Chat, Full Manuals, Customer Helpline and more on our website:
WWW.AESGLOBALUS.COM

* ALWAYS TEST THE UNIT ON SITE BEFORE INSTALLATION TO AVOID RE-STOCKING FEE * See full T&Cs on our website

Site Wiring

1

PSU Enclosure
(Sold Separately)



Intercom
(Install at desired height)

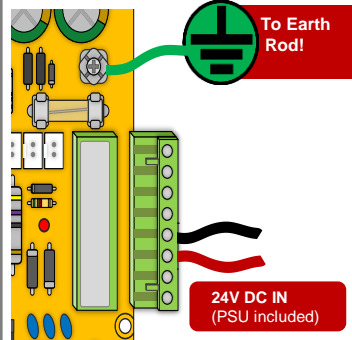
DC Power Cable
(1.5mm2 – 8m MAX)

Keep PSU as close to the unit as possible.

CAT5 to handset

Power

2



SITE SURVEY

RESTOCKING FEES MAY APPLY IF RETURNED AFTER INSTALL DUE TO SITE ISSUES. PLEASE SEE FULL T&C'S ON OUR WEBSITE

TIP: It is recommended that the system be fully tested on site **BEFORE** installation. You must test to ensure that the system is capable of operating on the desired site. Power the system on and place the handsets in their expected locations around the property and then test that everything is working **BEFORE** mounting any items to the walls.



Please read this entire manual before installing this product. A full comprehensive manual is available on our website for additional information.

POWER CABLE

KEEP POWER SUPPLY AS CLOSE AS POSSIBLE.

TIP: Most technical calls received are due to installers using CAT5 or alarm cable to power the unit.

NEITHER are rated to carry enough power! (1.2amp peak)

Please use the following cable:

- Up to 2 metres (6 feet) – Use minimum 0.5mm² (18 gauge)
- Up to 4 metres (12 feet) – Use minimum 0.75mm² (16 gauge)
- Up to 8 metres (24 feet) – Use minimum 1.0mm² (14 gauge)

INGRESS PROTECTION



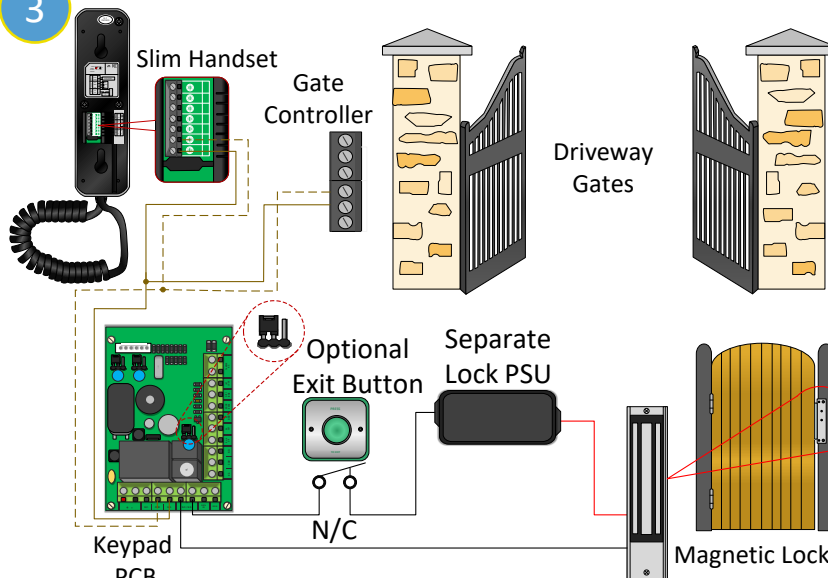
We recommend sealing all entry holes for prevention of insects that can cause issues with a risk of shorting out components.



To maintain the IP55 rating please follow the sealing instructions included. (also available online)

Relay Connections

3



TIP: The highlighted jumper link controls the common of relay 2.

N/O = COMMON
When jumper is on the left

N/C = COMMON
When jumper is on the right (default position)

If you wish to trigger the magnetic lock with the handset you are required to wire into the EG IN and (-) GND on the keypad.



EXTRA RESOURCES

NEED MORE ASSISTANCE?

+1 (321) 900 4599

SCAN THIS QR CODE TO BE BROUGHT TO OUR RESOURCES PAGE.

VIDEOS | HOW-TO GUIDES | MANUALS | QUICK START GUIDES

* ALWAYS TEST THE UNIT ON SITE BEFORE INSTALLATION TO AVOID RE-STOCKING FEE * See full T&Cs on our website

How to Use the Handset

Handset

Earpiece

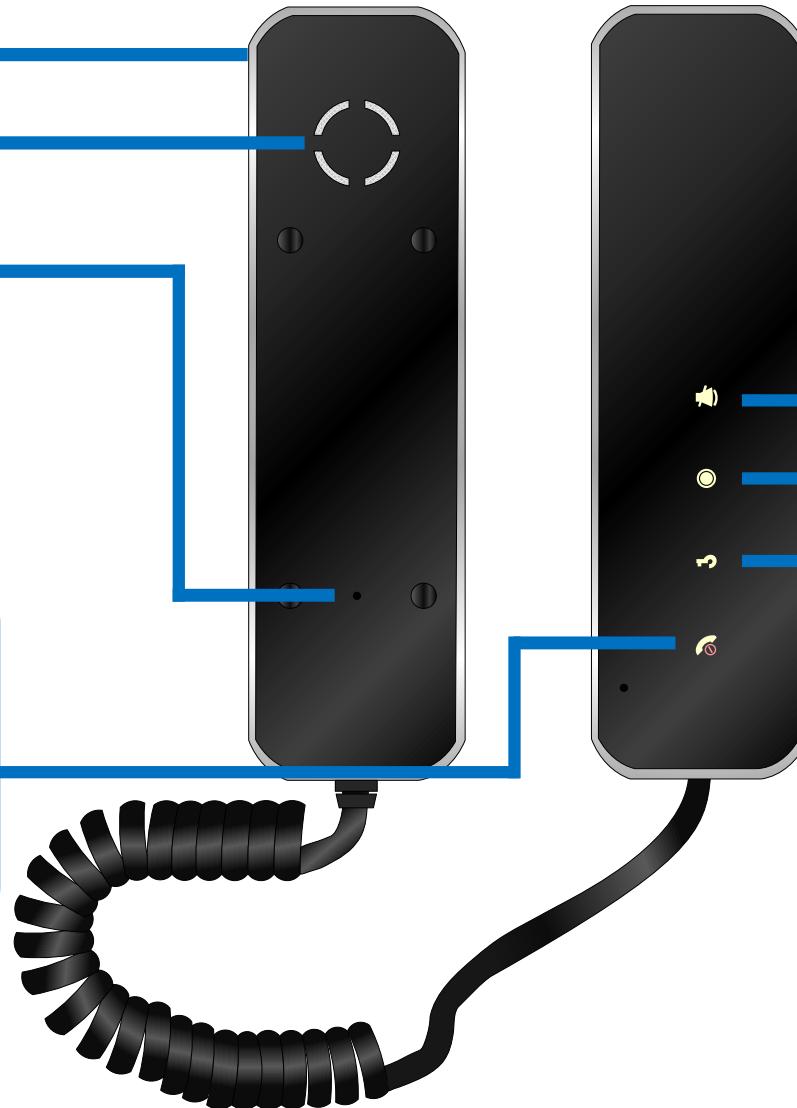
Microphone

TIP: Press to open communications before gate/door can be triggered. Press and HOLD to turn off handset.

Press to cycle ring tones then answer/end call button to confirm. HOLD for 5 secs to mute calls.

Press for inter calling.

Door/gate release. Momentary press for gates. Press & hold for magnetic lock

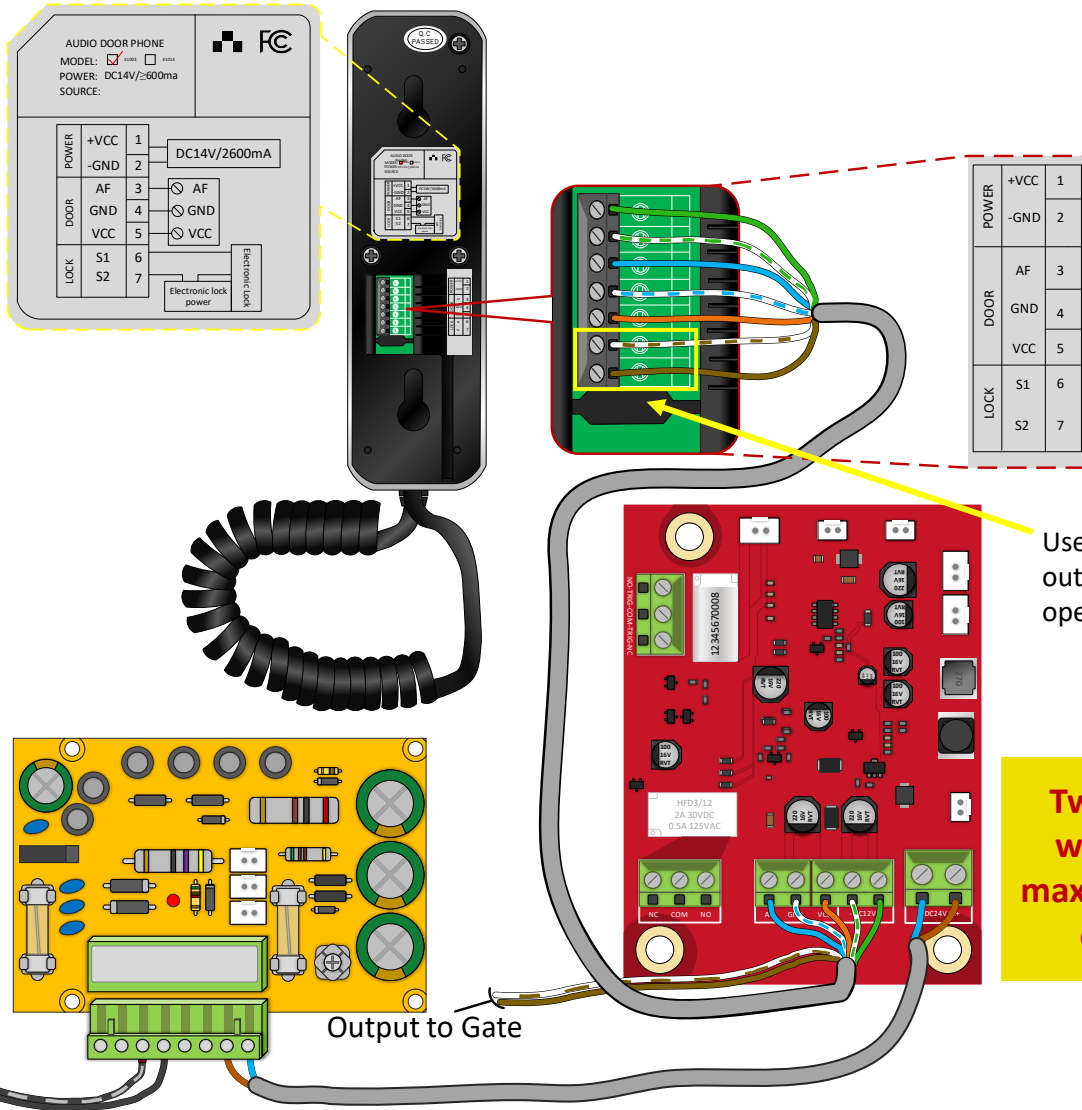


* ALWAYS TEST THE UNIT ON SITE BEFORE INSTALLATION TO AVOID RE-STOCKING FEE * See full T&Cs on our website

Slim Classic Wiring Method (Single Handset)

Wiring Method 1 (Single PSU) Up to 300m

For under 300m, it is possible to use only one power supply at the gate and feed power from the door/gate station to the handset as shown. **NOT RECOMMENDED FOR MULTI-HANDSET INSTALLS.**



Use this relay output (normally open only)

Twisted CAT5 or telecoms wire used in reference to maximum distances between callpoint and handset



Output to Gate

* ALWAYS TEST THE UNIT ON SITE BEFORE INSTALLATION TO AVOID RE-STOCKING FEE * See full T&Cs on our website

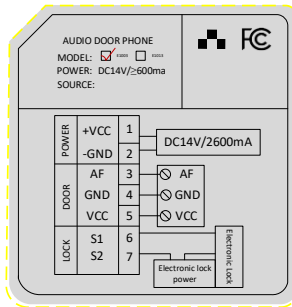
Multiple Handsets Wiring Method

Up to 300m

← 20m MAX between handsets →

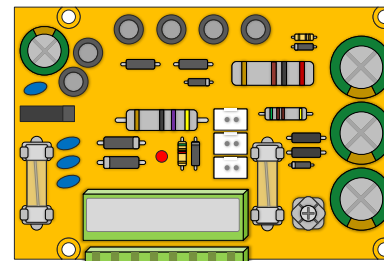
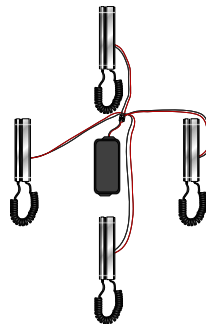
To next handset
(maximum of four)

Keep Power Supply close or use > 0.5mm² conductors

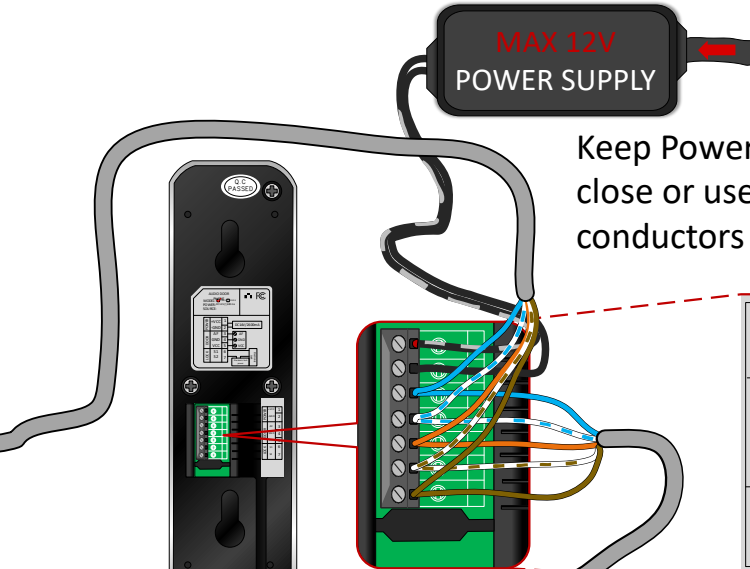
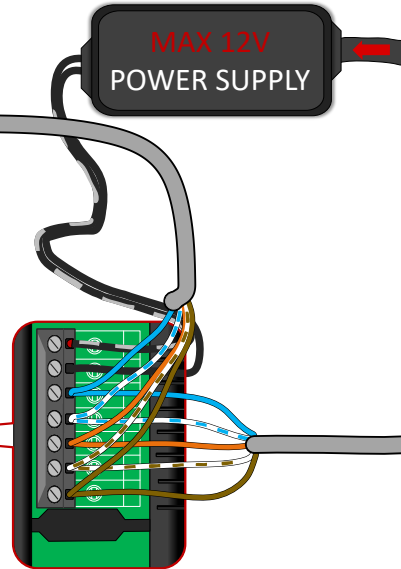
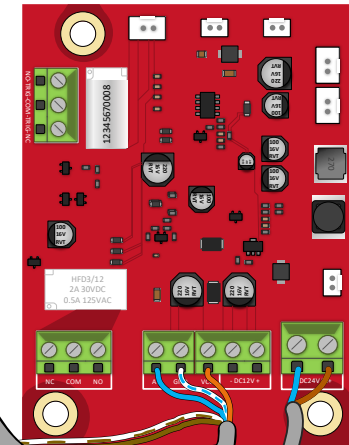


POWER	+VCC	1
	-GND	2
DOOR	AF	3
	GND	4
	VCC	5
LOCK	S1	6
	S2	7

TIP: You can wire power direct from the power supply to each handset in a star configuration.



Output to Gate



Slim Classic - Hardwired Intercom System



STILL HAVING TROUBLE?
Find all of our support options such as Web Chat, Full Manuals, Customer Helpline and more on our website:
WWW.AESGLOBALUS.COM

* ALWAYS TEST THE UNIT ON SITE BEFORE INSTALLATION TO AVOID RE-STOCKING FEE * See full T&Cs on our website

AES KPX1200 STANDARD OPERATIONS



LED 1 = RED/GREEN. It lights up in **RED** while one of the outputs is inhibited. It is flashing during inhibition paused. It is also the **Wiegand** LED for feedback indication and will light up in **GREEN**.
LED 2 = AMBER. It flashes in Standby. It shows the system status in synchronization with the beeps.
LED 3 = RED/GREEN. It lights up in **GREEN** for **OUTPUT 1** activation; and **RED** for **OUTPUT 2** activation.

{A} BACK-LIT JUMPER = FULL/AUTO.

FULL – The keypad gives dim backlit in standby. It turns to full backlit when a button is pressed, then back to dim backlit 10 secs after the last button is pressed.

AUTO – The backlit is **OFF** in standby. It turns to **FULL** backlit when a button is pressed, then back to **OFF** 10 seconds after the last button is pressed.

{B} ALARM OUTPUT SETTING = (RESOURCES PAGE - ADVANCED WIRING OPTIONS)

{9,15} Egress for PTE (Push To Exit)

If you wish to make use of this feature you must wire your PTE switch using terminals 9 & 15 marked as 'EG IN' and '(-) GND'.

Note: The egress feature on the keypad is designed to only activate **Output 1**. Ensure that the entry you wish to gain access to via the PTE switch is connected to this output. Programmable for Instant, Delay with Warning and/or Alarm Momentary or Holding Contact for Exit Delay.

AES KPX1200 RELAY OUTPUT INFORMATION

{3,4,5} **RELAY 1** = 5A/24VDC Max. N.C. & N.O. dry contacts.
1,000 (Codes) + 50 Duress Codes

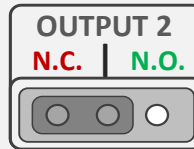
{6,7,C} **RELAY 2** = 1A/24VDC Max. N.C. & N.O. dry contacts.
100 (Codes) + 10 Duress Codes (COMMON port is determined by the Shunt Jumper marked as C on the diagram. Connect your device to N.C. and N.O. and then move the jumper to the required position and test.)

{10,11,12} **RELAY 3** = 1A/24VDC Max. N.C. & N.O. dry contacts.
100 (Codes) + 10 Duress Codes

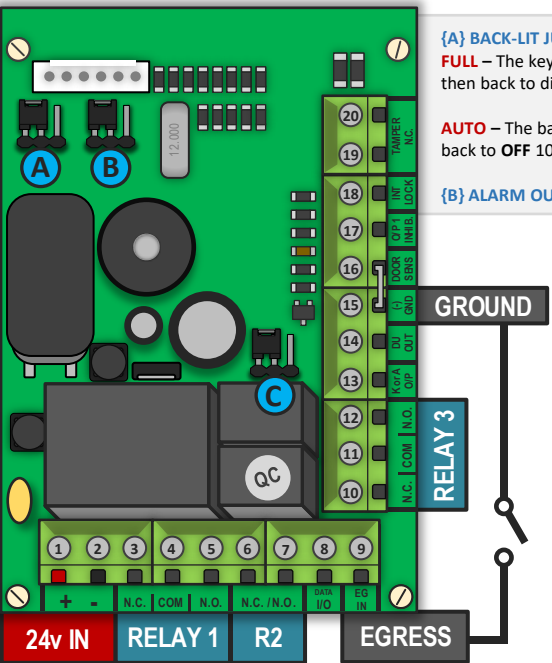
{19,20} **Tamper Switch** = 50mA/24VDC Max.
N.C. dry contact.

RELAY CONNECTIONS	
N/O	Normally Open
C	Common
N/C	Normally Closed

ALL THREE OUTPUTS ARE VOLT-FREE CONTACTS.



^MOVE JUMPER LINK^



{1,2} **24v 2Amp** = Regulated PSU
(Pre-wired for inside an AES Intercom System)

Did you know?

Extra Prox cards and Prox Tags can be purchased in packs of 10 & 50.
(PROX versions only)



NEED MORE ASSISTANCE?

Please scan this QR Code to be brought to our Resources page where you can find all of our guides and available resources.



EXTRA RESOURCES

SITE SURVEY

TIP: If fitting this keypad as an independent system then no site survey is required. If the keypad is included inside a callpoint then please follow the site survey details included on the main product guide.

POWER CABLE

KEEP POWER SUPPLY AS CLOSE AS POSSIBLE.

TIP: Most technical calls received are due to installers using CAT5 or alarm cable to power the unit.

NEITHER are rated to carry enough power! (1.2amp peak)

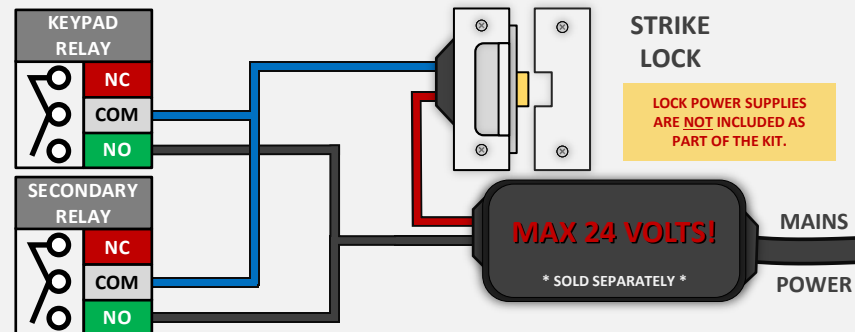
Please use the following cable:

Up to 2 metres (6 feet) – Use minimum 0.5mm² (18 gauge)

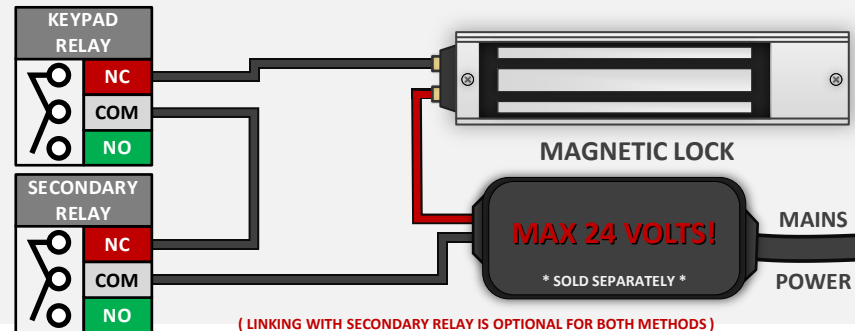
Up to 4 metres (12 feet) – Use minimum 0.75mm² (16 gauge)

Up to 8 metres (24 feet) – Use minimum 1.0mm² (14 / 16 gauge)

STRIKE LOCK WIRING METHOD



MAGNETIC LOCK WIRING METHOD

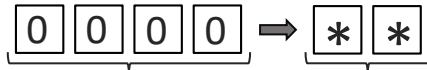


* ALWAYS TEST THE UNIT ON SITE BEFORE INSTALLATION TO AVOID RE-STOCKING FEE * See full T&Cs on our website


KEYPAD PROGRAMMING

Note: Programming can only begin 60 seconds after powering the device on.

1) Enter programming mode:

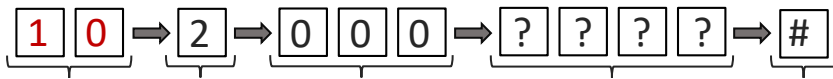


DEFAULT PROGRAMMING CODE ENTER / EXIT PROGRAMMING



The amber LED will remain **SOLID** once you enter programming mode successfully. Press ** again to leave programming mode.

2) Adding and deleting a new keypad entry code:



10 = Relay 1 (1000 limit)
20 = Relay 2 (100 limit)
30 = Relay 3 (100 limit)

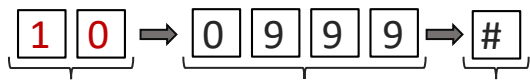
2 = add
5 = delete

MEMORY LOCATION
000 to 999 = Relay 1
001 to 100 = Relay 2
001 to 100 = Relay 3

Note: After using '5' to delete a code just type the memory location followed by #

** This example will add code '????' to location 000 on Relay 1 **

3) Delete ALL of the codes & cards saved in a relay group:



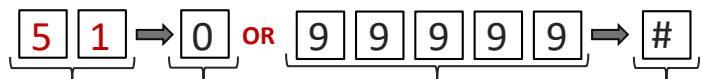
10 = Relay 1 (1000 limit)
20 = Relay 2 (100 limit)
30 = Relay 3 (100 limit)

SUPER DELETE CODE VALIDATE

Note: Take care when deleting full relay groups because once deleted there is no way to restore these previously stored codes to the keypad.

** This example will delete ALL of the codes stored for Relay 1 **

4) Change relay output times & modes:



51 = Relay 1
52 = Relay 2
53 = Relay 3

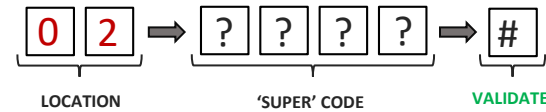
0 = LATCHING MODE
1-99999 = MOMENTARY TRIGGER TIME (SECONDS)

Note: Setting the relay time to 0 will change all codes for this output to latching codes, re-enter same code again to unlatch.

** For example: '515#' will set Relay 1 to trigger for 5 seconds **

KEYPAD PROGRAMMING CONTINUED

5) Adding a SUPER user code: (1 MAX)

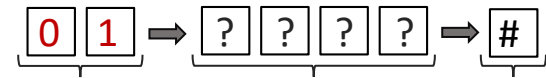


LOCATION 'SUPER' CODE VALIDATE

Note: You can add one SUPER code as an optional feature which allows a single code to operate all 3 outputs. To use input SUPER code followed by # then 1, 2 or 3 to select.

Example - 5555#2

6) Change the programming code:



LOCATION 4-8 DIGIT CODE VALIDATE

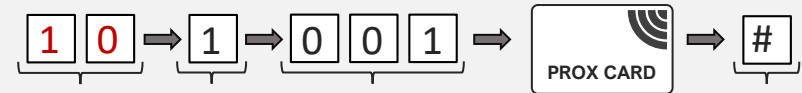
Note: If you set a 4-8 digit code then user codes must also be the same amount of digits.

Example: If you set a 6 digit programming code all access codes must also be 6 digits long.

** ALWAYS MAKE NOTE OF NEW CODE ONCE CHANGED **

(OPTIONAL PROGRAMMING FOR PROX MODELS ONLY)

7) Adding a new PROX card or tag:



10 = Relay 1 (1000 limit)
20 = Relay 2 (100 limit)
30 = Relay 3 (100 limit)

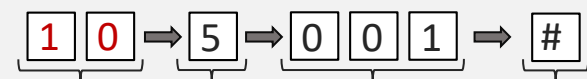
1 = add

MEMORY LOCATION
000 to 999 = Relay 1
001 to 100 = Relay 2
001 to 100 = Relay 3

PROX CARD
SWIPE PROX CARD or TAG VALIDATE

** This example will add a PROX card/tag to location 001 on Relay 1 **

8) Deleting a new PROX card or tag:



10 = Relay 1 (1000 limit)
20 = Relay 2 (100 limit)
30 = Relay 3 (100 limit)

5 = delete

MEMORY LOCATION
000 to 999 = Relay 1
001 to 100 = Relay 2
001 to 100 = Relay 3

VALIDATE

Note: Keep in mind that keypad codes and PROX card/tags must be saved in their own separate memory locations.

If a keypad code is stored on location 035 this means a card cannot be added to location 035.

** This example will delete a PROX card/tag from location 001 on Relay 1 **

PROGRAMMING CODE NOT WORKING?

*Note: In the event that the programming code has been forgotten or changed by accident, a **DAP Reset** of the keypad can be performed during the **60 second bootup phase**. Pressing the PTE during this time or replicating this by shorting terminals **9 & 15** together with a jumper link the keypad will emit 2 short beeps if this step has been performed successfully. Then enter the **DAP Code** (Directly Access Programming Code) (**8080****) on the front of the keypad as a backdoor into programming mode which will allow you to now set a new programming code, as per **Step 6** above.*

TROUBLESHOOTING

Q: No communications from gate to handset.

A: Try communicating from another handset.

- Check the green status LED is illuminated on the speech unit at the gate.
- Check the handset has been powered on. Press and hold the power button on the handset or check for illumination from the buttons.
- Remove handset and wire to the gate station at the gate with 6 feet of cable and check if that works. If it does, then the cable may have a break or be the wrong type.

Q: First handset works, but second handset does not.

A: Swap them around, and check if the problem follows the handset or remains with the location. If it remains with the location, it is an installation problem. Check wiring, cable gauge used for power etc. If it follows the handset, call technical support. It may have a defect or be damaged.

Q: Communications work but it does not release the gates or lock.

A: Listen for a relay click when the lock release button is pressed. Even better, remove the wires to the lock or gate, use a multimeter on continuity mode, and listen for bell tone when the lock release button is pressed. If that works, then it is an installation problem. Check wiring diagram for tips. If that does not work, check the distance from the gate to the handset. It may be too far to use the outdoor speech unit relay. Try using 2 cores to connect the relay inside the handset to the gate controller instead.

INTERCOM MAINTENANCE

Bug ingress is a common issue in unit failures. Ensure that all components are sealed accordingly and check occasionally. **(Do not open the panel in the rain / snow unless correctly equipped to keep the internals dry. Ensure the unit is securely closed after maintenance)**

If you have an AB, AS, ABK, ASK callpoint it will have silver edges which are marine grade stainless steel so in normal weather conditions should not rust however it can dull or discolour over time. This can be polished with a suitable stainless-steel cleaner and cloth.

ENVIRONMENTAL INFORMATION

The equipment that you bought has required the extraction and use of natural resources for its production. It may contain hazardous substances for the health and the environment. In order to avoid the dissemination of those substances in our environment and to diminish the pressure on the natural resources, we encourage you to use the appropriate take-back systems. Those systems will reuse or recycle most of the materials of your end life equipment.

The crossed-bin symbol marked in your device invites you to use those systems.



If you need more information on the collection, reuse and recycling systems, please contact your local or regional waste administration. You can also contact AES Global Ltd for more information on the environmental performances of our products.

This product is not a complete product until fully installed. It is therefore considered a component part of an overall system. The installer is responsible to check that the end installation complies with local regulatory requirements. This equipment forms part of a "fixed installation".

Note: The manufacturer cannot legally offer technical support to non-qualified gate or door installers. End users should employ the services of a professional install company to commission or support this product!