

ALL-O-MATIC



818-787-1988

allomatic.net

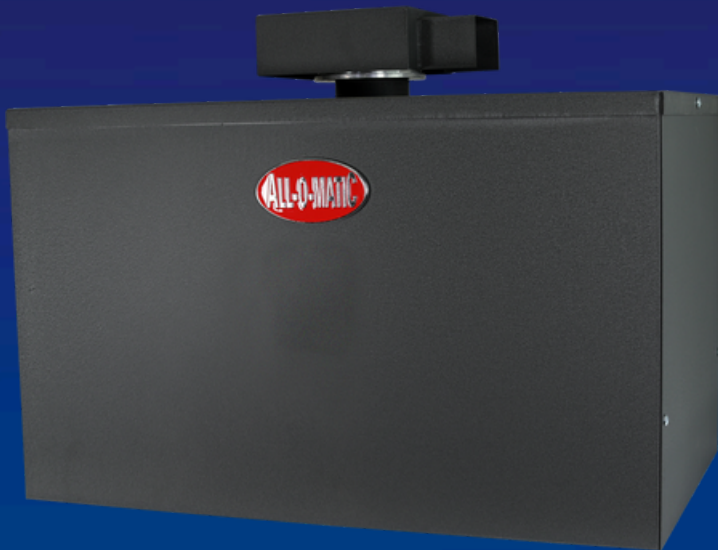
SW-375DC PRO

SWING GATE OPERATOR

ALL-BLDC PRO 36V CONTROL BOARD

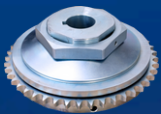


An industrial capacity **DC Swing Gate Operator** designed for the most complex commercial and industrial applications.

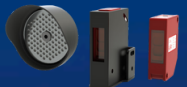


SW-375DC PRO FEATURES

- ✓ LCD DISPLAY WITH ON BOARD DIAGNOSTICS
- ✓ AUTO CLOSE TIMER & OBSTRUCTION SENSING DIGITAL ADJUSTMENTS
- ✓ INTEGRATED WIRELESS PRIMARY/SECONDARY
- ✓ PARTIAL OPEN OPTION
- ✓ PROGRAMMABLE AUXILIARY INPUTS AND OUTPUTS
- ✓ USB PORT TO EXPORT DIAGNOSTIC DATA AND FIRMWARE UPDATES
- ✓ BUILT-IN VOLT METER THROUGH LCD DISPLAY
- ✓ CYCLE COUNTER AND MUCH MORE



TORQUE
LIMITER



AOM-RED EYE
INCLUDED



COMMERCIAL



INDUSTRIAL

SLIDERS | SWINGERS | OVERHEADS

The standard by which all other automatic gate operators are measured.



818-787-1988

allomatic.net

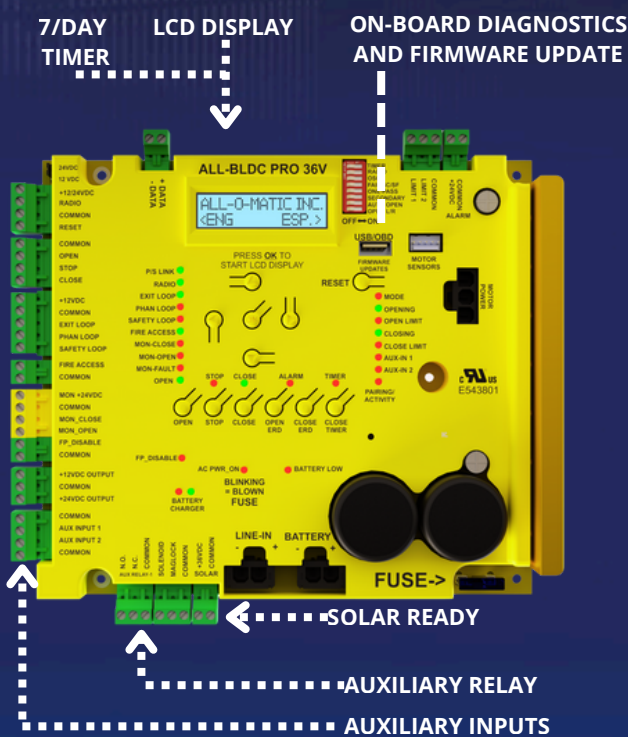


SCAN FOR PRODUCT INFORMATION

SPECS

SW-375DC PRO

SWING GATE OPERATOR



AVAILABLE ACCESSORIES



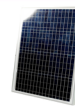
AML-1200B
Mag Lock



GH-5000
Hinges



Fire
Boxes



36V
Solar
Panel



PRIME VD-1
Loop Detector

- Max Gate Weight** 5,000 lbs.
- Max Gate Length** 30 feet
- Warranty** 3 year commercial
- Motor** 36 VDC brushless motor
- Gate Speed** Adjustable 14-28 seconds per 90° opening
- Power Options** 115/230/480 VAC single phase
And 36VDC solar panel
- Duty Cycle** Continuous
- Battery Backup** Integrated, with (3) 14Ah 12VDC batteries
- Battery Backup Capacity** Up to 300 cycles on a 2,000 lb. gate
- Temperature Range** -40 to 160°
- Gearbox Ratio** Large gearbox: 30:1
Small gearbox: 10:1
- Width X Length X Height** 19" x 31" x 25"
- Shipping Weight** 435 lbs. + 110 lbs. arm and wrench
- Emergency Release** 5/8" bolt to remove arm
- Belt Size** 4L-240 (AX22)
- Main Sprocket Size** 60A45X5
- Chain Size** 60NP
- Gearbox Sprocket** Top: 60B23X1.5
Bottom: 50B18X1.125 and 50B20X7/8
- Breaker Requirement** 20 amp dedicated
- Gearbox Pulley** 5" with 5/8" bore
- Motor Pulley** 2" with 5/8" bore



COMMERCIAL



INDUSTRIAL

The Warrantor warrants the SW-375DC PRO Gate Operator. ALL-O-MATIC INC warrants its gate openers for a period of five (3) years in commercial installation to be free from defects in circuitry, motor, gear box and workmanship. This warranty applies from the date of purchase to the original owner. Warrantor will repair or, at its option, replace any device which it finds to require service. This device must be sent to the warrantor at the consumer's expense. The warrantor will return the repaired or replaced unit to the customer at the consumer's expense. Labor charges for dealer service or replacement are the responsibility of the owner. These warranties are in lieu of all other warranties either expressed or implied, and ALL-O-MATIC INC shall not be liable for consequential damage. All implied warranties of merchantability and or fitness for a particular purpose are hereby disclaimed and excluded. This limitation is not valid in jurisdictions which do not allow limitation of incidental or consequential damages or limitation of warranty periods. Caution in order to obtain this policy, please complete the registration card and send it by mail within 30 days of purchasing from ALL-O-MATIC INC. or your INSTALLER. If not registered only a one year warranty on all parts will be provided.

SLIDERS | SWINGERS | OVERHEADS

The standard by which all other automatic gate operators are measured.