



Red | hub

Quick Start **Guide**



PN: RHUB

View the user manual here:

www.support.pdk.io

www.prodatakey.com | 801.317.8802

Copyright © 2026 ProdataKey Inc. All rights reserved. PDK, PDKio,
and the Red logos are trademarks of ProdataKey Inc.

REV 01132026

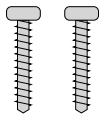
Package Contents



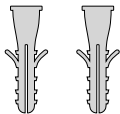
Red Hub (1)



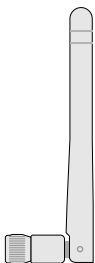
Gang Box
Mounting Screws (2)



Mounting Screws (2)



Wall Anchor (2)



External Antenna (1)
(optional)

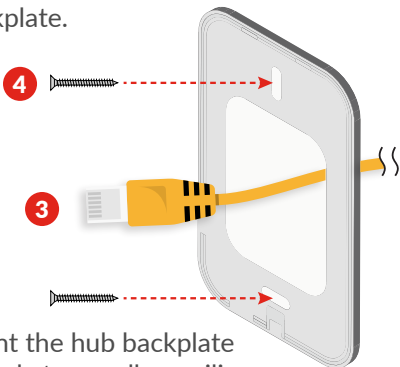
1. Mount Hub



1 Determine where the hub will be mounted.

2 Using the mounting template, drill a hole for the ethernet cable to pass through.

3 Feed wire through the wall and backplate.



4 Mount the hub backplate securely to a wall or ceiling.

2. Connect Hub



- 1** Connect a PoE cable to the RJ45 jack on the hub board. All Red Hubs come with a built-in RJ45 connection for network connectivity.
- *** *Once connected, the hub is self discoverable from PDK.io*

2. Connect Hub(cont)



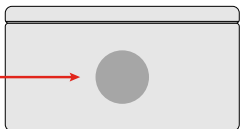
2 Mount the hub onto the backplate.



3 Secure with a security screw.

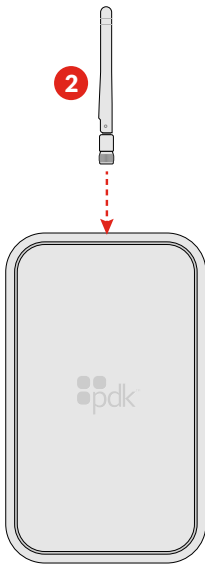


3. External Antenna(optional)

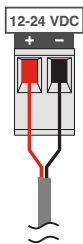


- 1** Remove the antenna opening cover.

- 2** Attach the antenna supplied with the hub. NOTE: The direction of the antenna will affect the signal.



4. Auxiliary Power (optional)



Auxiliary Power (Optional)

If PoE is not being used, connect power to the Auxiliary Power terminals. Auxiliary power is not required if you are using power from PoE connection.

Input 12-24VDC using a 18/2 wire.

Regulatory

This device complies with Part 15 of the FCC Rules. Operation is subject to the following two conditions: (1) this device may not cause harmful interference, and (2) this device must accept any interference received, including interference that may cause undesired operation.

Changes or modifications not expressly approved by the party responsible for compliance could void the user's authority to operate the equipment.

This device must be professionally installed by a qualified technician in accordance with the installation instructions provided by the manufacturer. Any attempt to install or modify the antenna without professional assistance could void the user's authority to operate this equipment.

This device is designed to operate with the antennas listed in its FCC certification. Use of other antennas could violate FCC regulations and void the user's authority to operate the equipment.

Part Number - RHUB

PDK Technical Support

Phone: 801.317.8802 option #2

Email: support@prodatakey.com

Knowledge Base: www.support.pdk.io